

Change-over Valves EM-U2



EM-U2

This electric motor operated change over valve is designed for use in two-line systems with a maximum operating pressure of 400 bar. It is available in 24 VDC and 230 VAC versions.

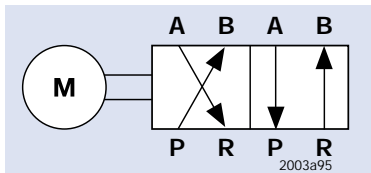
The principal of operation is similar to that of a 4/2 way valve which alternately discharges the lubricant fed by the pump into one of the two main lines while

the other line is connected to the return line connection of the pump. After all metering devices in the system have completed a half-cycle, the signaled change over process commences.

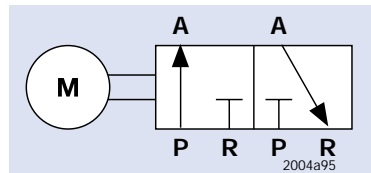
Depending on the version, the EM-U2 can also be used as a 2/2 or 3/2 way slider valve for lubrication circuits.

Models

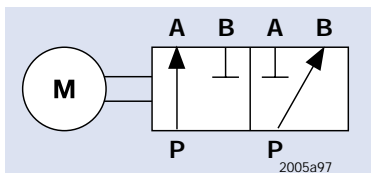
Part Nos.		Description
24 VDC Version	230 VAC Version	
618-28387-1	618-28388-1	change-over valve 4/2 way
625-28448-1	625-28450-1	3/2 way valve connection B closed
625-28449-1	625-28451-1	3/2 way valve connection R closed
625-28590-1	625-28591-1	2/2 way valve connections B & R closed



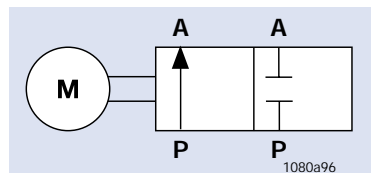
Change-over Valve
(4/2 Way Valve)



3/2 Way Valve
Connection B Closed



3/2 Way Valve
Connection R Closed



3/2 Way Valve
Connection B + R Closed

Technical Data

flow rate	maximum 65 liters/hour (17 US gal/hour)
operating pressure	maximum 400 bar (5800 psi)
threaded connections	G3/4 female (BSPP)
operating temperatures	-20° C to 80° C (-4° F to 176° F)
mounting position	variable
sound level	< 70 dBA
switching time	0.5 seconds
supply voltage	24 VDC or 230 VAC

Dimensions

	Height	Width	Depth
EM-U2	210 mm (8.4 in)	350 mm (14.0 in)	160 mm (8.3 in)