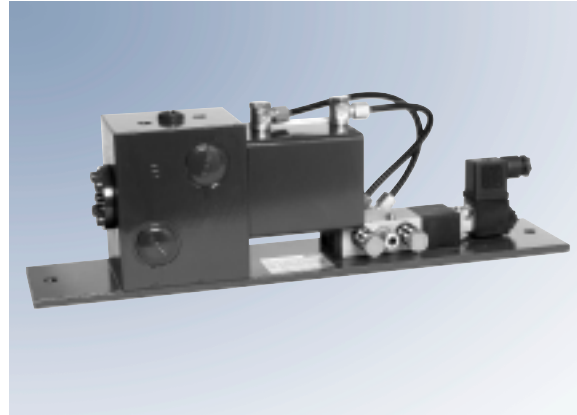


# Change-over Valves MP2



This pneumatically operated change-over valve is designed for use in two-line systems and operates like a 4/2 way valve which alternately discharges the lubricant fed by the pump into one of both main lines, while the other main line is connected to the return line connection of the pump. It can also be used as a 3/2 way valve for grease systems.

It is available in four voltages, 24 VDC, 110 VAC, 110 VDC and 220 VAC.



MP2

## Models

Part No.	Supply Voltage	Description
618-28965-2	24 VDC	MP2-24VDC
618-28964-2	110 V, 50/60 Hz	MP2-110AC/50-60Hz
618-28963-1	110 DC	MP2-110VDC
618-28966-2	220V, 50/60 Hz	MP2-220AC

## Technical Data

flow rate	maximum 65 liters/hour (17 US gal/hour)
operating pressure	400 bar (5800 psi)
compressed air	max. 10 bar (145 psi)
threaded connections	G 3/4 female (BSPP)
operating temperature	-20° C to 70° C (-4° F to 158° F)
mounting position	variable
sound pressure level	< 70 dBA

## Dimensions

	Height	Width	Depth
MP2	135 mm (5.4 in)	400 mm (16 in)	180 mm (7.2 in)

## Also Available Hydraulically Operated: Model MHY1

Part No.	Supply Voltage	Description
618-28883-2	24 VDC	MHY1-24VDC

Technical data correspond to MP2.

Operating hydraulic pressure: max. 60 bar (870 psi)